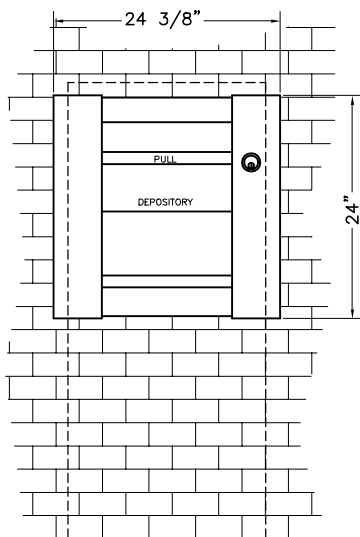
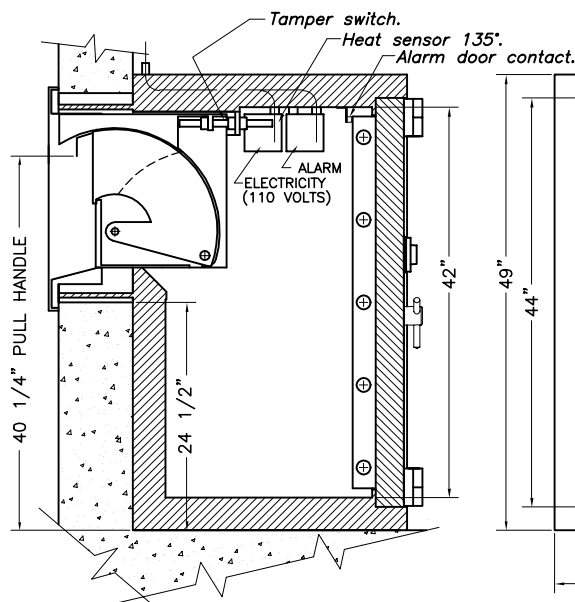


# THIN DRIVE-UP DEPOSITORY (TL-30)

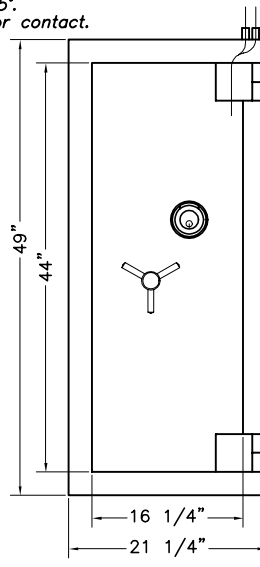
Thin Drive-Up Depository (TL-30)



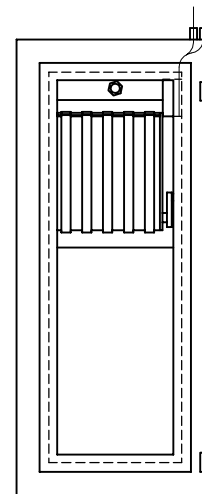
BANK CUSTOMER VIEW



VERTICAL CROSS SECTION



INSIDE VIEW



INSIDE VIEW WITH MAIN DOOR OMITTED

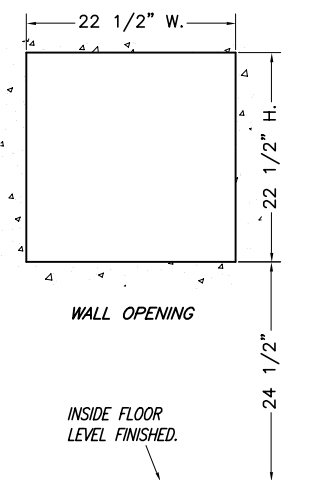
## CHARACTERISTICS

- Unit for bag deposits.
- The large capacity bag deposit compartment is exposed only when the required key has operated the lock in the depository frame.
- Anti-fishing device.
- Exterior fascia with stainless steel finish.
- Outside lighting system.
- Door of receiving chest is equipped with 1-3 wheel combination locks GR 2M #6630 with keylocking dial.
- Contacts for installation of alarm hook-up.
- Heat sensor 135° (see drawing).
- Tamper switch (see drawing).
- Alarm door contact (see drawing).
- 25 head keys standard.
- Maintenance free head mechanism.
- WEIGHT= 2050 lbs.

## OPTIONS

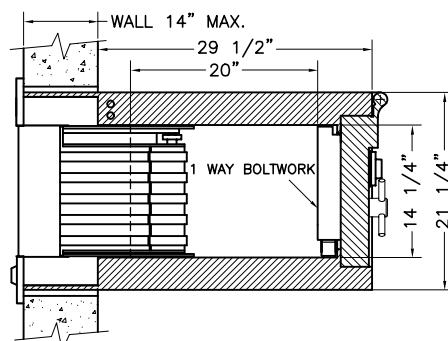
- Pre-wiring two circuits for alarm system to protect body and door of the receiving chest.
- 2 movement timelock.
- Unit for bag & envelope deposits. The unit can be changed in the field to bag only.
- Customer engraving on outside fascia.
- Available in TL-30x6 model.
- Extra head keys.
- Seismic detector.

(Head trap not available on this model).

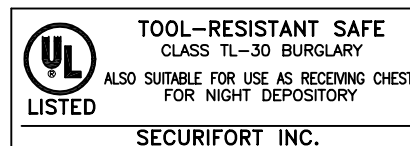
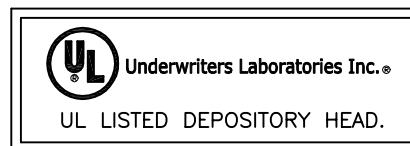


WALL OPENING

INSIDE FLOOR LEVEL FINISHED.



HORIZONTAL CROSS SECTION



## Thin Drive-Up Depository

NO	DATE	REVISION	BY
2	08 05 02	"PULL" IDENT. ADDED ON FASCIA.	RM
1	08 05 02	5 SLIDING BOLTS WAS 3.	RM

DRAWING NO			SCALE		
PC 661			1/8" = 1"		
DATE	DRAWN BY		APP ED BY		
20 12 01	RM				