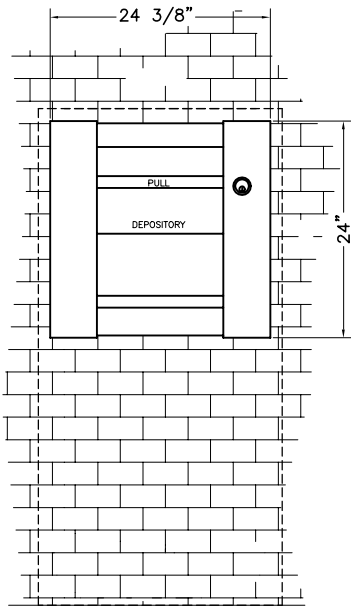
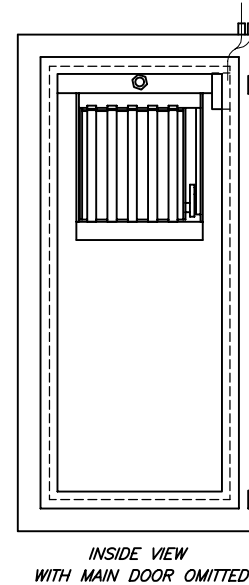
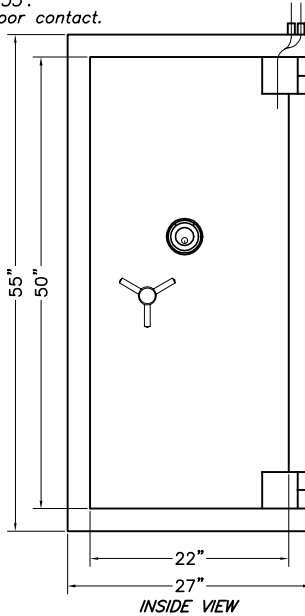
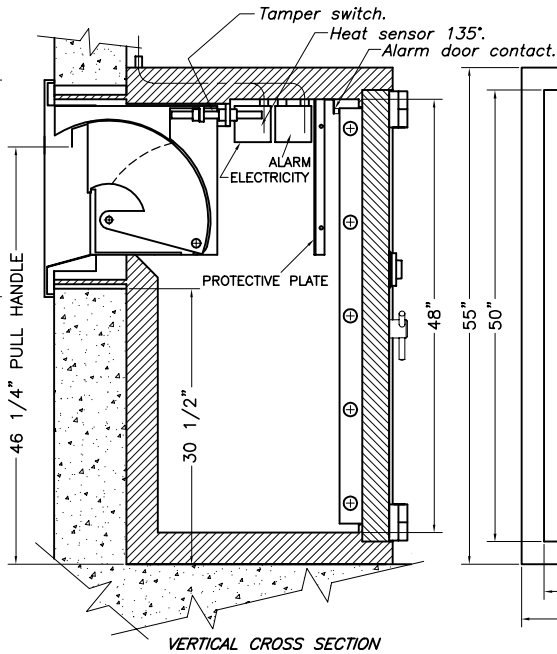


# REGULAR WALK-UP DEPOSITORY (TL-30) & (TL-30x6)



BANK CUSTOMER VIEW



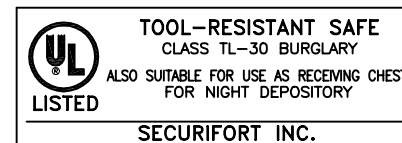
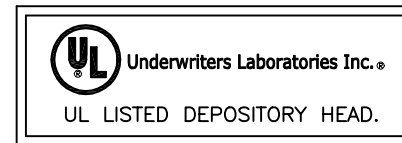
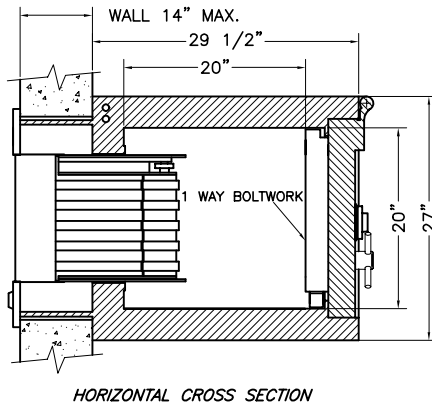
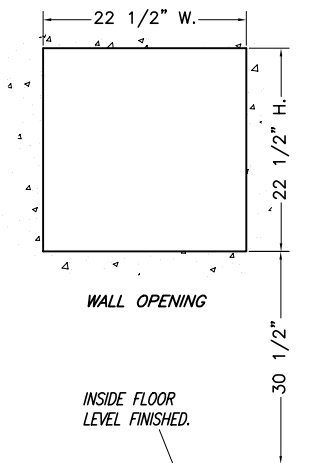
## Regular Walk-Up Depository (TL-30)

### CHARACTERISTICS

- Unit for bag deposits.
- The large capacity bag deposit compartment is exposed only when the required key has operated the lock in the depository frame.
- Anti-fishing device.
- Exterior fascia with stainless steel finish.
- Outside lighting system.
- Door of receiving chest is equipped with 1-3 wheel combination locks GR 2M #6630 with keylocking dial.
- Contacts for installation of alarm hook-up.
- Heat sensor 135° (see drawing).
- Tamper switch (see drawing).
- Alarm door contact (see drawing).
- 25 head keys standard.
- Maintenance free head mechanism.
- APPROX. WEIGHT (TL-30)= 2600 lbs.
- APPROX. WEIGHT (TL-30x6)= 2950 lbs.

### OPTIONS

- Pre-wiring two circuits for alarm system to protect body and door of the receiving chest.
- 2 movement timelock.
- Unit for bag & envelope deposits. The unit can be changed in the field to bag only.
- Customer engraving on outside fascia.
- Available in TL-30x6 model.
- Extra head keys.
- Seismic detector.



## Regular Walk-Up Depository

NO	DATE	REVISION	BY
2	08 05 02	"PULL" IDENT. ADDED ON FASCIA.	RM
1	08 05 02	5 SLIDING BOLTS WAS 3.	RM

DRAWING NO	DRAWN BY	DATE
PC 659	RM	20 12 01