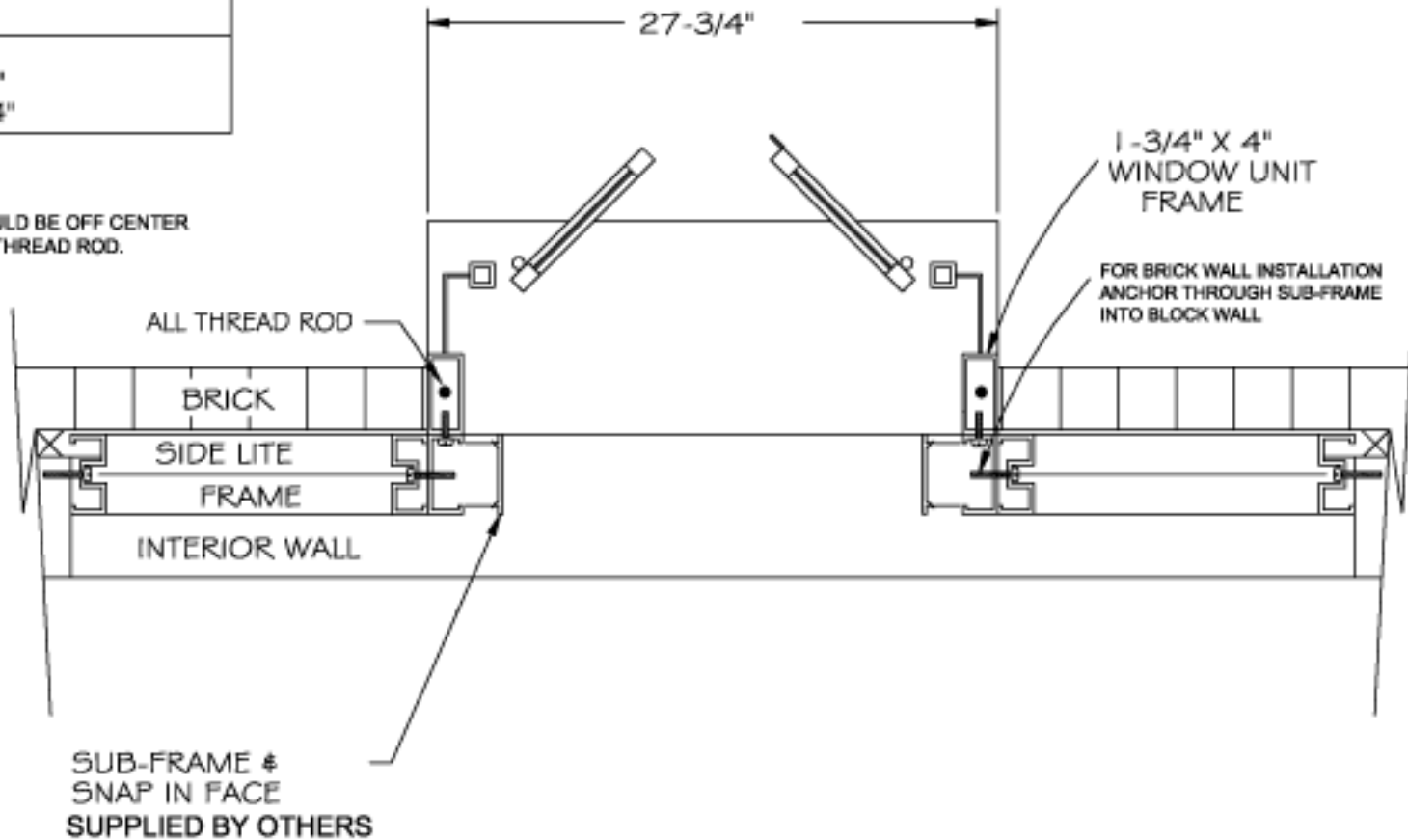


Rough Opening:  
28-1/8" (W) X 40-3/8" (H)

Actual Dimension:  
27-3/4"(W) X 40"(H)

Service Opening:  
PW-3 - 14-1/4" x 18-1/4"  
PW-4 - 14-1/4" x 24-1/4"

NOTE:  
DRILLING SHOULD BE OFF CENTER  
TO AVOID ALL THREAD ROD.



NOTE: THIS DRAWING EMBODIES A CONFIDENTIAL PROPRIETARY DESIGN ORIGINATED AND OWNED BY QUIKSERV CORP., AND IS SUBMITTED UNDER A CONFIDENTIAL RELATIONSHIP. ALL PATENT, MANUFACTURING, SALE RIGHTS REGARDING THE SAME ARE RESERVED EXCEPT TO THE EXTENT RIGHTS ARE EXPRESSLY GRANTED TO OTHERS. THE RECIPIENT AGREES BY ACCEPTING THESE DRAWINGS NOT TO SUPPLY OR DISCLOSE ANY INFORMATION REGARDING THEM TO ANY UNAUTHORIZED PERSON.

**INTERBANK-EQUIPMENT**  
**BLACK CANYON CITY, AZ 85324**

**MODEL PW-3 & 4 TOP VIEW**

Submitted By: Dnan Coble

Date: 11/30/05

Sheet:  
WDO1