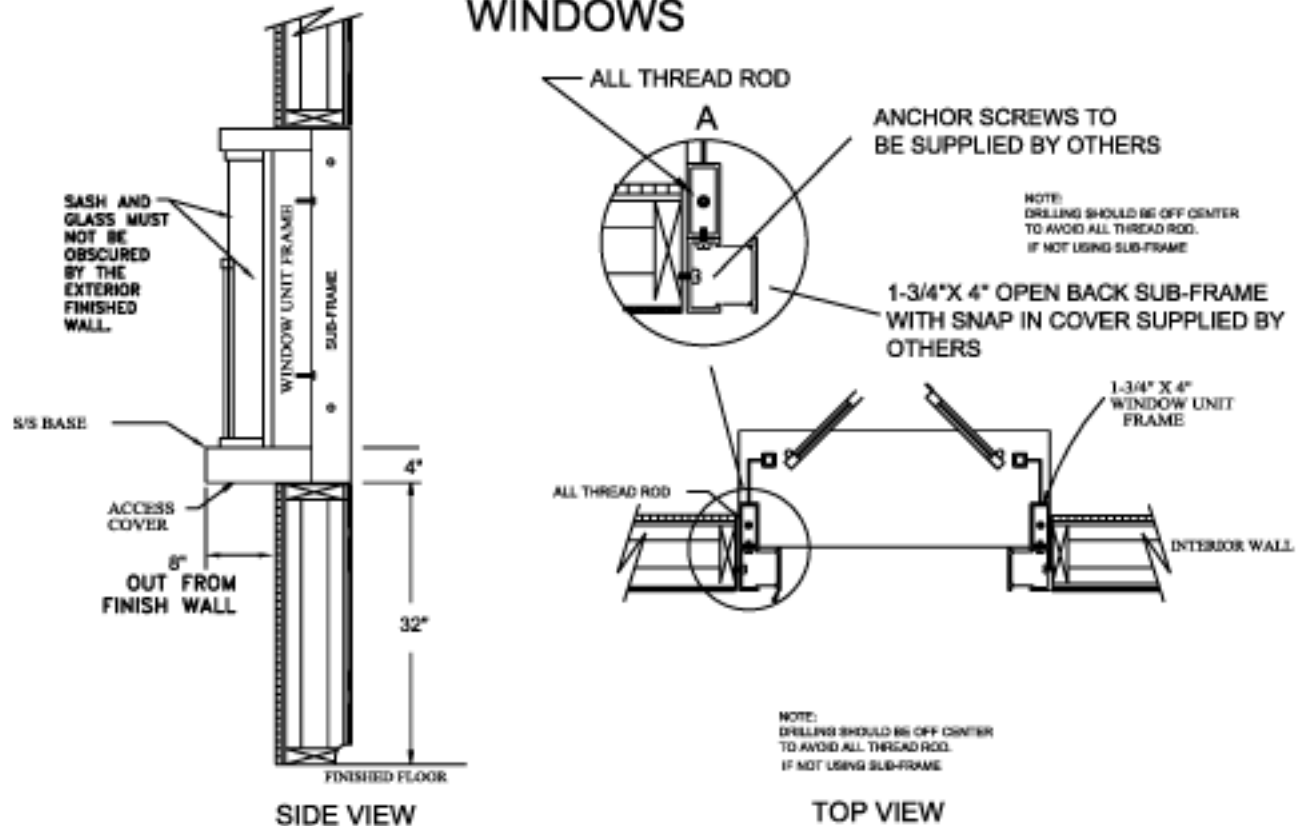


# TYPICAL INSTALLATION DRAWINGS FOR PROJECTED MANUAL BI-FOLDING OUTSWING WINDOWS



- 1) QUIKSERV WINDOWS MUST BE INSTALLED LEVEL AND SQUARE TO WORK PROPERLY
- 2) ANCHOR SCREWS TO BE SUPPLIED BY CONTRACTOR
- 3) INSTALL 3 SIDED OPEN BACK SUB-FRAME (1 3/4" X 4") IF NEEDED. SEE FIG. A
- 4) ANCHOR THROUGH EACH SIDE AT TWO PLACES APPROX. 5" AT TOP AND BOTTOM OF EACH JAMB SEE FIG. A
- 5) CAUTION WHEN DRILLING THRU SIDE JAMB AS ALL THREAD RODS ARE LOCATED IN EACH SIDE JAMB SEE FIG. A
- 6) RECOMMENDED HEIGHT FROM FLOOR TO SERVICE OPENING TO BE 36" ( CHECK ANY AND ALL LOCAL CODES )
- 7) SILICONE ALL EXTERIOR AND INTERIOR JOINTS
- 8) ALL OTHER TYPE OF ANCHORING TO BE APPROVED BY ENGINEER

**NOTE: THIS DRAWING EMBODIES A CONFIDENTIAL PROPRIETARY DESIGN ORIGINATED AND OWNED BY QUIKSERV CORP., AND IS SUBMITTED UNDER A CONFIDENTIAL RELATIONSHIP. ALL PATENT, MANUFACTURING, SALE RIGHTS REGARDING THE SAME ARE RESERVED EXCEPT TO THE EXTENT RIGHTS ARE EXPRESSLY GRANTED TO OTHERS. THE RECIPIENT AGREES BY ACCEPTING THESE DRAWINGS NOT TO SUPPLY OR DISCLOSE ANY INFORMATION REGARDING THEM TO ANY UNAUTHORIZED PERSON.**

**INTERBANK-EQUIPMENT  
BLACK CANYON CITY, AZ  
85324**

**INSTALLATION DWG. FOR PROJECTED  
MANUAL BI-FOLDING OUTSWING WINDOWS**

Submitted By: BRIAN COBLE

Date: 1/20/2006

Sheet: W-IN009