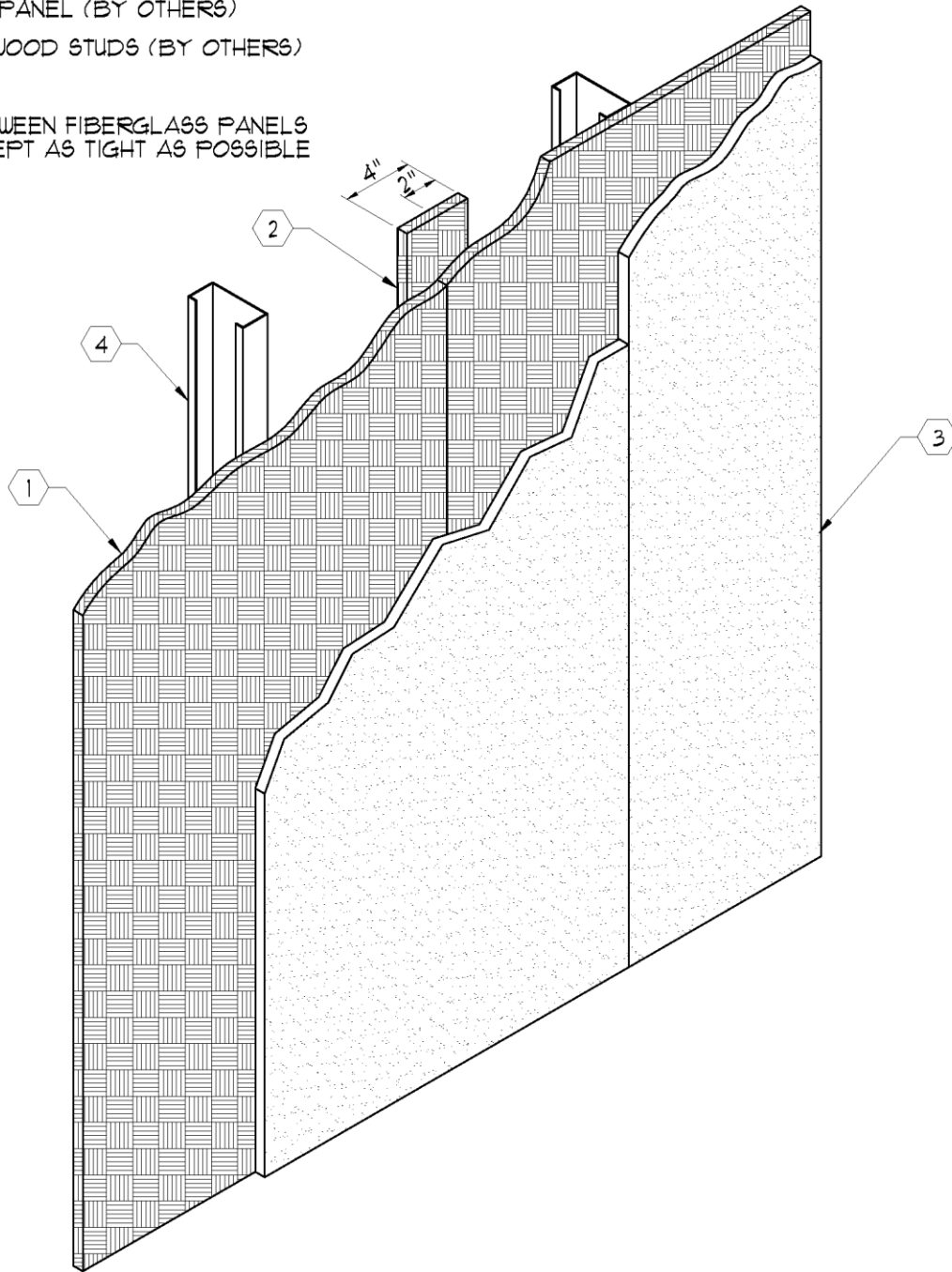


NOTES:

- ① ARMORTEX® BULLET RESISTANT FIBERGLASS PANEL
- ② BATTEN STRIP (CUT FROM FIBERGLASS FULL SHEET)
- ③ DRY WALL PANEL (BY OTHERS)
- ④ STEEL OR WOOD STUDS (BY OTHERS)

NOTE:

JOINTS BETWEEN FIBERGLASS PANELS MUST BE KEPT AS TIGHT AS POSSIBLE



C:\MASTERS\ARMORTEX\FIBERINS\F1010501.DWG © 08/25/03 @ 14:19 User: andy\_perez

REVISIONS			Represented by: Interbank-Equipment			BALLISTIC LEVEL	
No.	DESCRIPTION	DATE	P. O. Box 632 Black Canyon Citv. AZ 85324			DRN.BY:	DATE:
			TITLE: ARMORTEX® BULLET RESISTANT FIBERGLASS INSTALLATION			A. Perez 03-14-03	
			PROJECT NAME:			CHKD.BY:	DATE:
			UNLESS OTHERWISE SPECIFIED ALL DIMENSIONS ARE IN INCHES			DRAWING No.	SHEET
			SCALE NONE	PROJECT No.		F1010501	1 OF 1