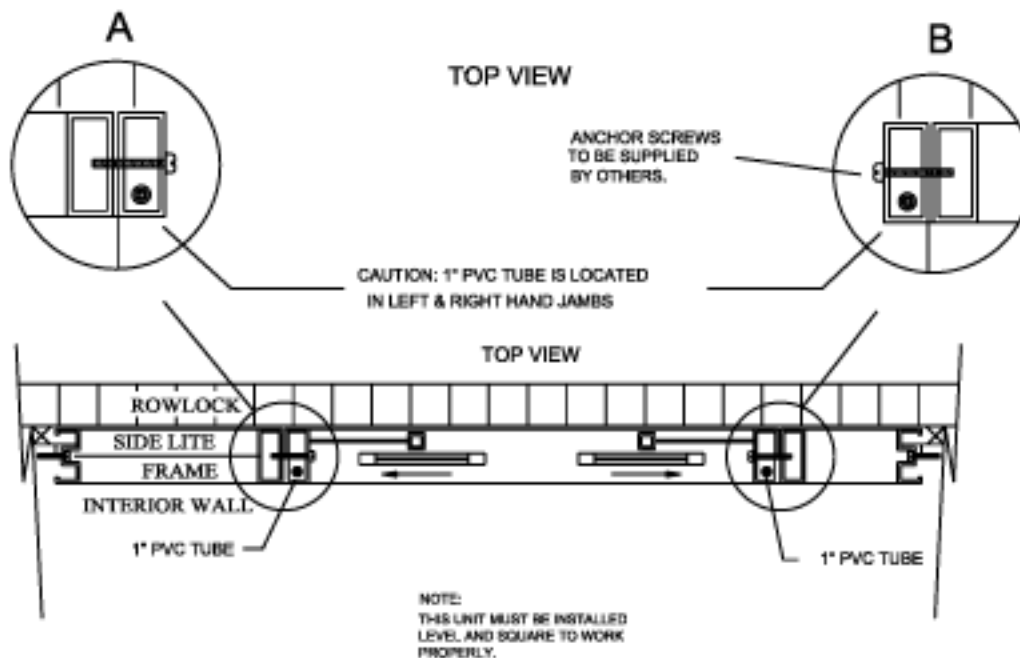


TYPICAL INSTALLATION DRAWINGS FOR BI-PARTING SELF CLOSING HORIZONTAL SLIDING WINDOWS



- 1) QUIKSERV WINDOWS MUST BE INSTALLED LEVEL AND SQUARE TO WORK PROPERLY
- 2) ANCHOR SCREWS TO BE SUPPLIED BY CONTRACTOR
- 3) ANCHOR THROUGH EACH SIDE JAMBS AT TWO PLACES TOP & BOTTOM OF EACH JAMB USING PRE-DRILLED HOLES SEE FIG. A & B
- 4) CAUTION AS 1" PVC TUBES ARE LOCATED IN ONE OR MORE OF THE SIDE JAMBS. (SEE DIA. A)
DRILLING INTO 1" PVC TUBES WILL VOID WARRANTY
- 5) RECOMMENDED HEIGHT FROM FLOOR TO SERVICE OPENING TO BE 36" (CHECK ANY AND ALL LOCAL OR CITY CODES)
- 6) SILICONE ALL EXTERIOR AND INTERIOR JOINTS
- 7) ALL OTHER TYPE OF ANCHORING TO BE APPROVED BY ENGINEER

NOTE: THIS DRAWING EMBODIES A CONFIDENTIAL PROPRIETARY DESIGN ORIGINATED AND OWNED BY QUIKSERV CORP., AND IS SUBMITTED UNDER A CONFIDENTIAL RELATIONSHIP. ALL PATENT, MANUFACTURING, SALE RIGHTS REGARDING THE SAME ARE RESERVED EXCEPT TO THE EXTENT RIGHTS ARE EXPRESSLY GRANTED TO OTHERS. THE RECIPIENT AGREES BY ACCEPTING THESE DRAWINGS NOT TO SUPPLY OR DISCLOSE ANY INFORMATION REGARDING THEM TO ANY UNAUTHORIZED PERSON.

INTERBANK-
EQUIPMENT
P. O. BOX 632
BLACK CANYON CITY,
AZ 85324

INSTALLATION DWG. BI-PARTING HORIZONTAL SLIDERS

Submitted By:

BRIAN COBLE

Date:

1/20/2006

Sheet:

W-IN010