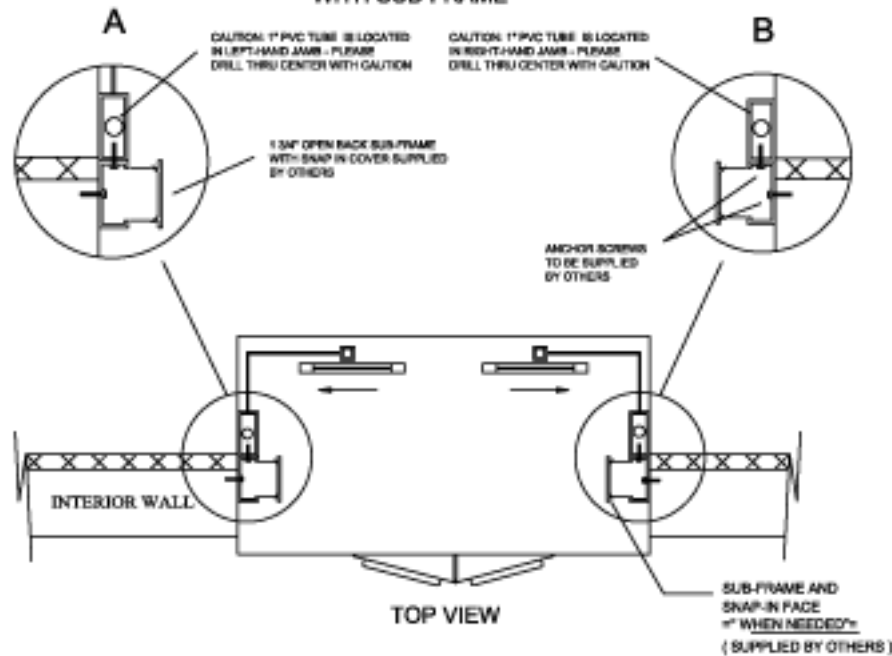


**TYPICAL
INSTALLATION DRAWINGS
FOR PROJECTED BI-PARTING HORIZONTAL
SLIDING WINDOWS
WITH SUB-FRAME**



- 1) QUIKSERV WINDOWS MUST BE INSTALLED LEVEL AND SQUARE TO WORK PROPERLY
- 2) ANCHOR SCREWS TO BE SUPPLIED BY CONTRACTOR
- 3) INSTALL 3 SIDED OPEN BACK SUB-FRAME IF NEEDED (1-3/4" X 4") SEE FIG. A & B
- 4) ANCHOR THROUGH EACH SIDE AT TWO PLACES APPROX. 5" AT TOP AND BOTTOM OF EACH JAMB SEE FIG. A & B
- 5) CAUTION WHEN DRILLING - 1" PVC TUBE LOCATED IN LEFT SIDE JAMB SEE FIG. A
- 6) CAUTION WHEN DRILLING IN RIGHT SIDE JAMB - 1" PVC TUBE LOCATED IN JAMB SEE FIG. B
- 7) RECOMMENDED HEIGHT FROM FLOOR TO SERVICE OPENING TO BE 36" (CHECK ANY AND ALL LOCAL CODES)
- 8) SILICONE ALL EXTERIOR AND INTERIOR JOINTS
- 9) ALL OTHER TYPE OF ANCHORING TO BE APPROVED BY ENGINEER

NOTE: THIS DRAWING EMBODIES A CONFIDENTIAL PROPRIETARY DESIGN ORIGINATED AND OWNED BY QUIKSERV CORP., AND IS SUBMITTED UNDER A CONFIDENTIAL RELATIONSHIP. ALL PATENT, MANUFACTURING, SALE RIGHTS REGARDING THE SAME ARE RESERVED EXCEPT TO THE EXTENT RIGHTS ARE EXPRESSLY GRANTED TO OTHERS. THE RECIPIENT AGREES BY ACCEPTING THESE DRAWINGS NOT TO SUPPLY OR DISCLOSE ANY INFORMATION REGARDING THEM TO ANY UNAUTHORIZED PERSON.

INTERBANK-EQUIPMENT
P.O. BOX 632
BLACK CANYON CITY, AZ 85324

**INSTALLATION DWG. FOR PROJECTED
BI-PARTING HORIZONTAL SLIDERS**

Submitted By: BRIAN COBLE

Date: 3/18/2008

Sheet: W-IN012