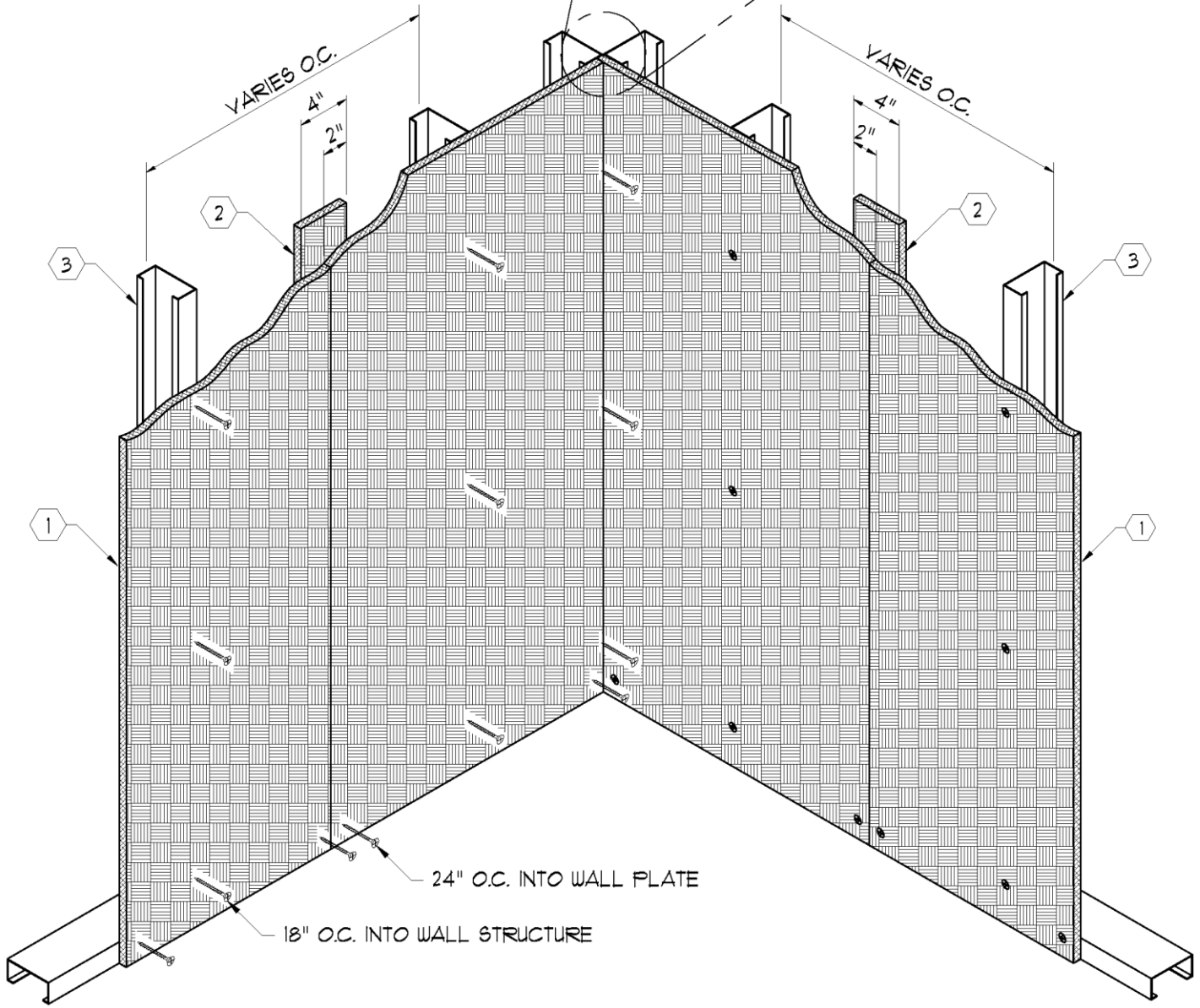
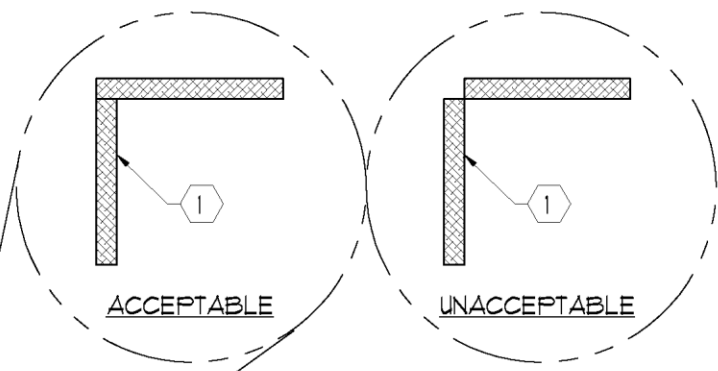


NOTES:

- ① UL LISTED ARMORTEX® BULLET RESISTANT FIBERGLASS PANEL
- ② BATTEN STRIP (CUT FROM FIBERGLASS FULL SHEET)
- ③ STEEL OR WOOD STUDS (BY OTHERS)
- ④ JOINTS BETWEEN FIBERGLASS PANELS MUST BE KEPT AS TIGHT AS POSSIBLE



(BULLET RESISTANT PANEL SHOULD BE INSTALLED WITH FULL LOAD RESTING SECURELY AGAINST SLAB. ANCHOR TO WALL PLATE AND WALL STRUCTURE AS SHOWN.)

C:\MASTERS\ARMORTEX\FIBERINS\F1010504.DWG.DWG 02/27/03 @ 14:24 User: andy perez

REVISIONS			Represented by: Interbank-Equipment		BALLISTIC LEVEL	
No.	DESCRIPTION	DATE	P. O. Box 632 Black Canvon Citv. AZ 85324		DRN.BY:	DATE:
			TITLE: ARMORTEX® BULLET RESISTANT FIBERGLASS INSTALLATION		CHKD.BY: A. Perez	03-14-03
			UNLESS OTHERWISE SPECIFIED ALL DIMENSIONS ARE IN INCHES		PROJECT NAME:	DATE:
			SCALE: NONE	PROJECT No.:	DRAWING No. F1010504	SHEET 1 OF 1