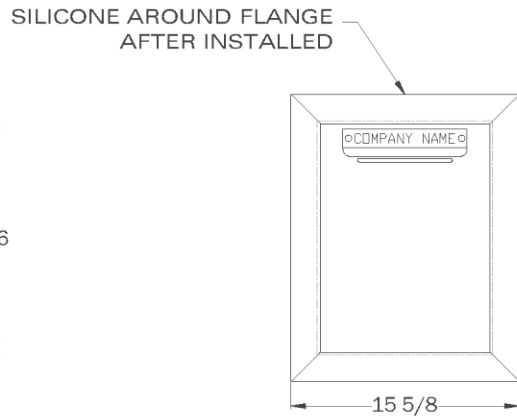
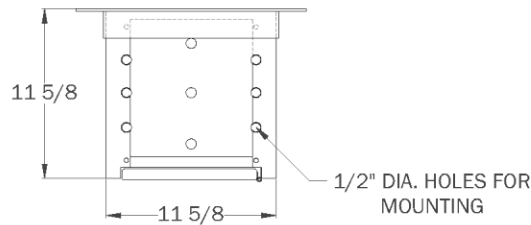


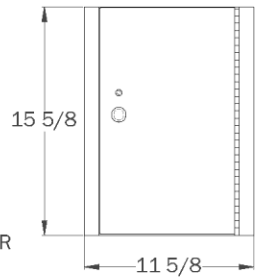
LEFT SIDE VIEW



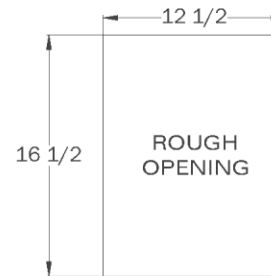
FRONT VIEW (SIDE 2)



TOP VIEW (SAME AS BOTTOM)



BACK VIEW (SIDE 1)



CENTER OF ROUGH OPENING SHOULD BE LESS THAN 43" FROM EXTERIOR GRADE

MODEL 500-IW INCLUDES

| PART ID | DESCRIPTION |
|---------|--|
| 0106 | CABINETS WALLS ARE CONSTRUCTED OF HEAVY GAUGE FOLD-WELD STAINLESS STEEL (SS). 1/8" SS TOP AND BOTTOM MOUNTING PLATES HAVE 1/2" DIAMETER PRE DRILLED HOLES FOR VERTICAL ANCHORING. ALL BRASS-WORKS HIGH SECURITY LOCK WITH (2) DOUBLE BITTED KEYS AND STRONG CAMS. RAINSHIELD FASTENS BENEATH ID PLATE TO PROTECT 1/4" X 6 1/4" WIDE PAYMENT SLOT. BLACK SIGNS: PLACE PAYMENTS HERE DO NOT USE CASH THANK YOU |
| 1209 | ALUMINUM FLANGE 2" X 2" ALUMINUM ANGLE CUT, FITTED, AND FASTENED TO M500-IW. ALL WEATHER SEALED FOR EXTERIOR INSTALLATION. |
| 1209 | ID PLATE 1 1/4" X 8 1/2" WIDE ENGRAVED WITH YOUR NAME |

ACCESSORY OPTIONS

| PART ID | DESCRIPTION |
|---------|--|
| 0609 | "CLOSED" SLOT COVER ATTACHES INSIDE WITH (2) WING NUTS |
| 0601 | DOUBLE LOCK DOOR PANEL WITH (2) ALL BRASS-WORKS HIGH SECURITY LOCKS AND (2) DOUBLE BITTED KEYS FOR EACH LOCK |
| 0703 | LARGE SLOT ENTRY PANEL 2" X 10" WIDE SLOT INSTALLED OPPOSITE ACCESS DOOR (SIDE 2) INCLUDES SS SPRING LOADED CLOSER PLATE AND HEAVY DUTY RAINSHIELD ABOVE SLOT. |
| 0704 | SECOND PAYMENT SLOT 1/4" X 6 1/4" WIDE SLOT OPENING INSTALLED OPPOSITE PRIMARY SLOT, RAINSHIELD INSTALLED ABOVE PAYMENT SLOT. |
| 0712 | DOUBLE SIDED ACCESS FOR PASS-THRU APPLICATIONS CLEAR OPENING IS 8 1/8" X 14 1/2" HIGH SLOT IS OPTIONAL |
| 0801 | SS ENVELOPE HOLDER 8" X 4 1/2" WIDE (25 CAPACITY) |
| 0802 | SS ENVELOPE HOLDER 10 1/2" X 4 1/2" WIDE (25 CAPACITY) |
| 0803 | SS ENVELOPE HOLDER 10 1/2" X 4 1/2" WIDE (100 CAPACITY) |

THE INFORMATION CONTAINED IN THIS DRAWING IS THE SOLE PROPERTY OF AMERICAN BOOK RETURNS. ANY MISUSE IN PART OR AS A WHOLE IS STRICTLY PROHIBITED BY AMERICAN BOOK RETURNS.

Distributed by:
Interbank-Equipment
Black Canyon City, AZ 85324

TITLE

M500-IW CUT SHEET

PART NAME

MODEL 500-IW

TOL: UNLESS OTHERWISE SPECIFIED
ANGLES: ±1°
.XX±.030
.XXX±.010

SHEET

1 OF 1

PART ID #

0106

SCALE

NTS

REV

| REV | DESCRIPTION | DATE | BY |
|-----|----------------|-----------------|------------|
| | RELEASE | 08-28-09 | JRS |